

**TOPS**  
**Report to the**  
**House Education Committee**



**BOARD OF REGENTS**  
**November 27, 2007**

# PURPOSES OF TOPS

- To provide financial incentives as a reward for good academic performance
- To promote academic success by requiring completion of a rigorous high school core curriculum
- To keep Louisiana's best and brightest in the state to pursue postsecondary educational opportunities

- To provide financial incentives as a reward for good academic performance
  - *The number of first time freshmen with TOPS enrolling in public postsecondary education has increased*

# Enrolling with TOPS

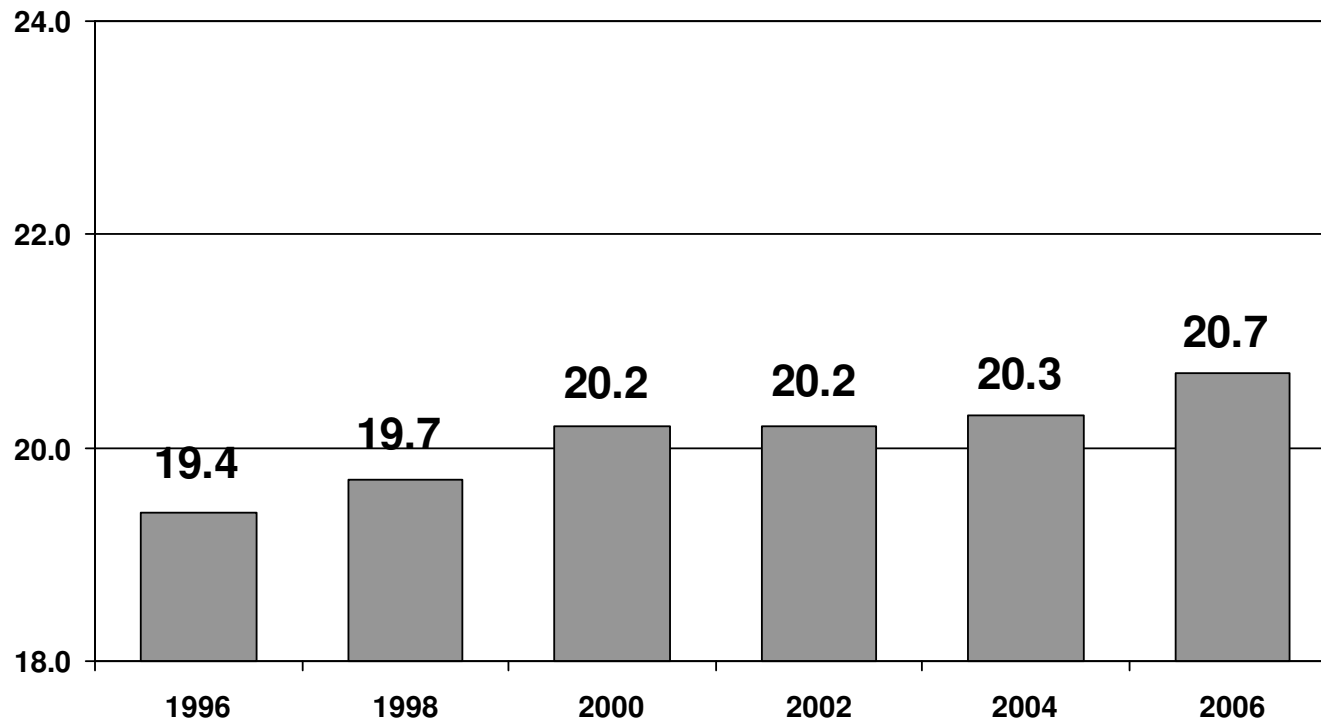
HS Graduating Year	Enrolling with TOPS
2003	12,270
2004	13,660
2005	<b><u>12,675</u></b>
2006	13,265

*TOPS Opportunity, Performance, or Honors Award  
Not including TOPS Tech*

*Source: LOSFA, Public and Private Postsecondary Institutions*

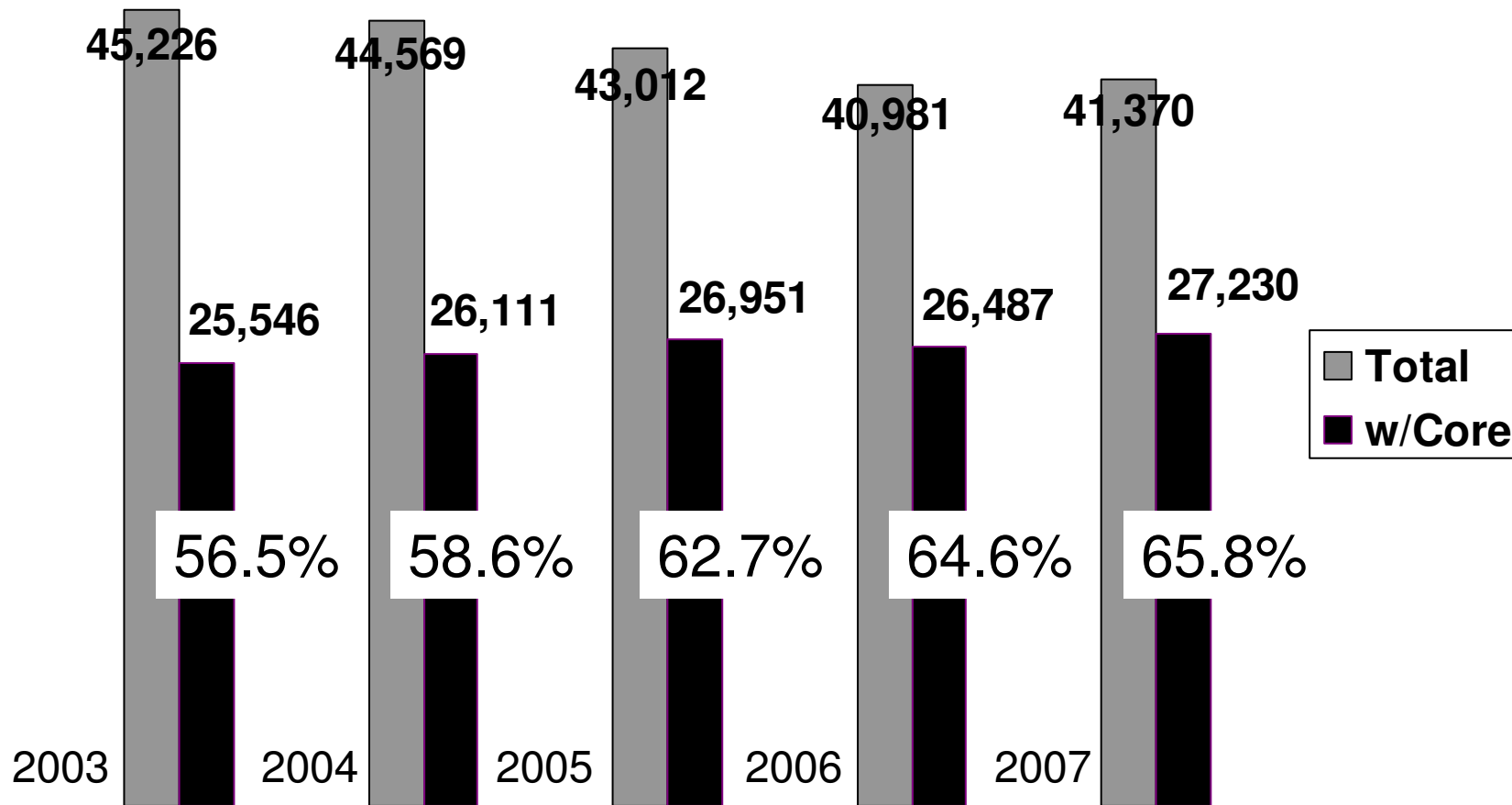
- To promote academic success by requiring completion of a rigorous high school core curriculum
  - *Students who take the core curriculum score significantly better on the ACT*

# ACT Average Scores of First-Time Freshmen



- To promote academic success by requiring completion of a rigorous high school core curriculum
  - *Students who take the core curriculum score significantly better on the ACT*
  - *More students in the graduating class are taking the core and more have been determined eligible for TOPS*

# Taking the Core



From 2003 to 2007, number of high school graduates reported in STS:

- declined by 3,856 or 8.5%
- those completing the core increased by 1,684 or 6.6%



# Eligible for TOPS

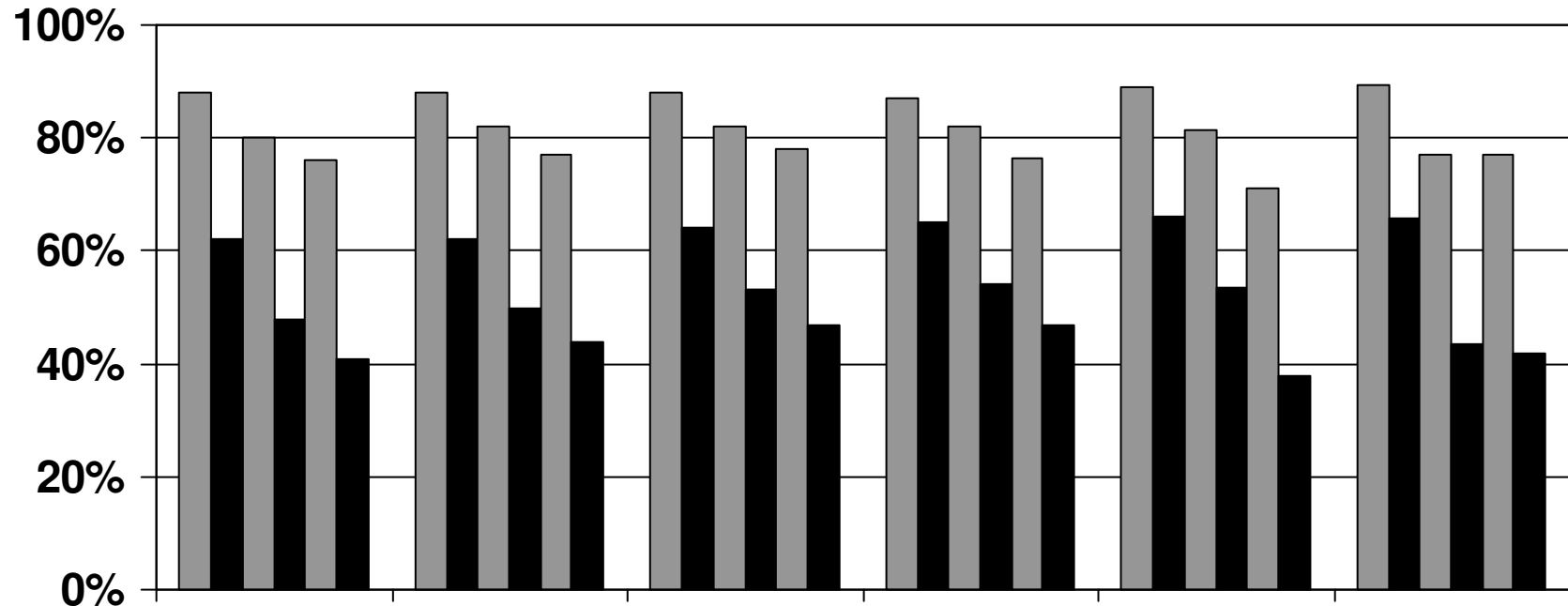
HS Graduating Year	Graduates	With TOPS Core	Eligible for TOPS	% Enrolled with TOPS
2003	45,226	25,546	14,797	83%
2004	44,569	26,111	14,961	91%
2005	43,012	26,951	15,273	<u>83%</u>
2006	<u>40,981</u>	<u>26,487</u>	<u>15,115</u>	88%
2007	41,370	27,230		

*TOPS Opportunity, Performance, or Honors Award  
Not including TOPS Tech*

*Source: STS Public and Private HS, September of Graduation Year,  
LOSFA, Public and Private Postsecondary Institutions*

- To promote academic success by requiring completion of a rigorous high school core curriculum
  - *Students who take the core curriculum score significantly better on the ACT*
  - *More students in the graduating class are taking the core and more are being determined eligible for TOPS*
  - *Students receiving a TOPS award persist in college at a higher rate than non-TOPS students*

# Persistence: Staying Enrolled

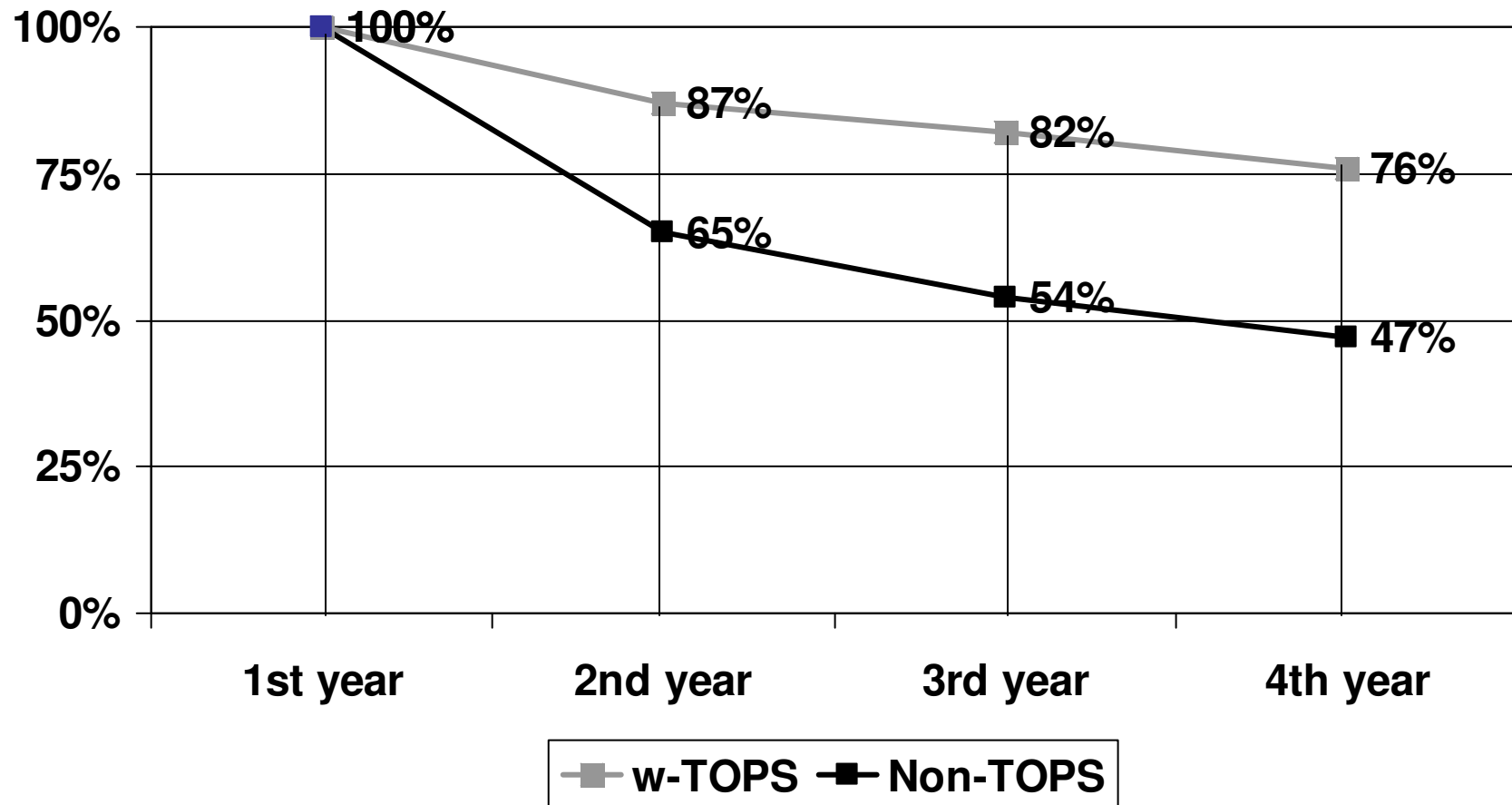


	1998	1999	2000	2001	2002	2003
2 <sup>nd</sup> yr w-TOPS	88%	88%	88%	87%	89%	89%
2 <sup>nd</sup> yr Non-TOPS	62%	62%	64%	65%	66%	66%
3 <sup>rd</sup> yr w-TOPS	80%	82%	82%	82%	81%	77%
3 <sup>rd</sup> yr Non-TOPS	48%	50%	53%	54%	53%	43%
4 <sup>th</sup> yr w-TOPS	76%	77%	78%	76%	71%	77%
4 <sup>th</sup> yr Non-TOPS	41%	44%	47%	47%	38%	42%

*TOPS Opportunity, Performance, or Honors Award  
Not including TOPS Tech*

*Source: LOSFA, Regents  
Public Institutions*

# *Persistence: Staying Enrolled* **2001 Entering Class**

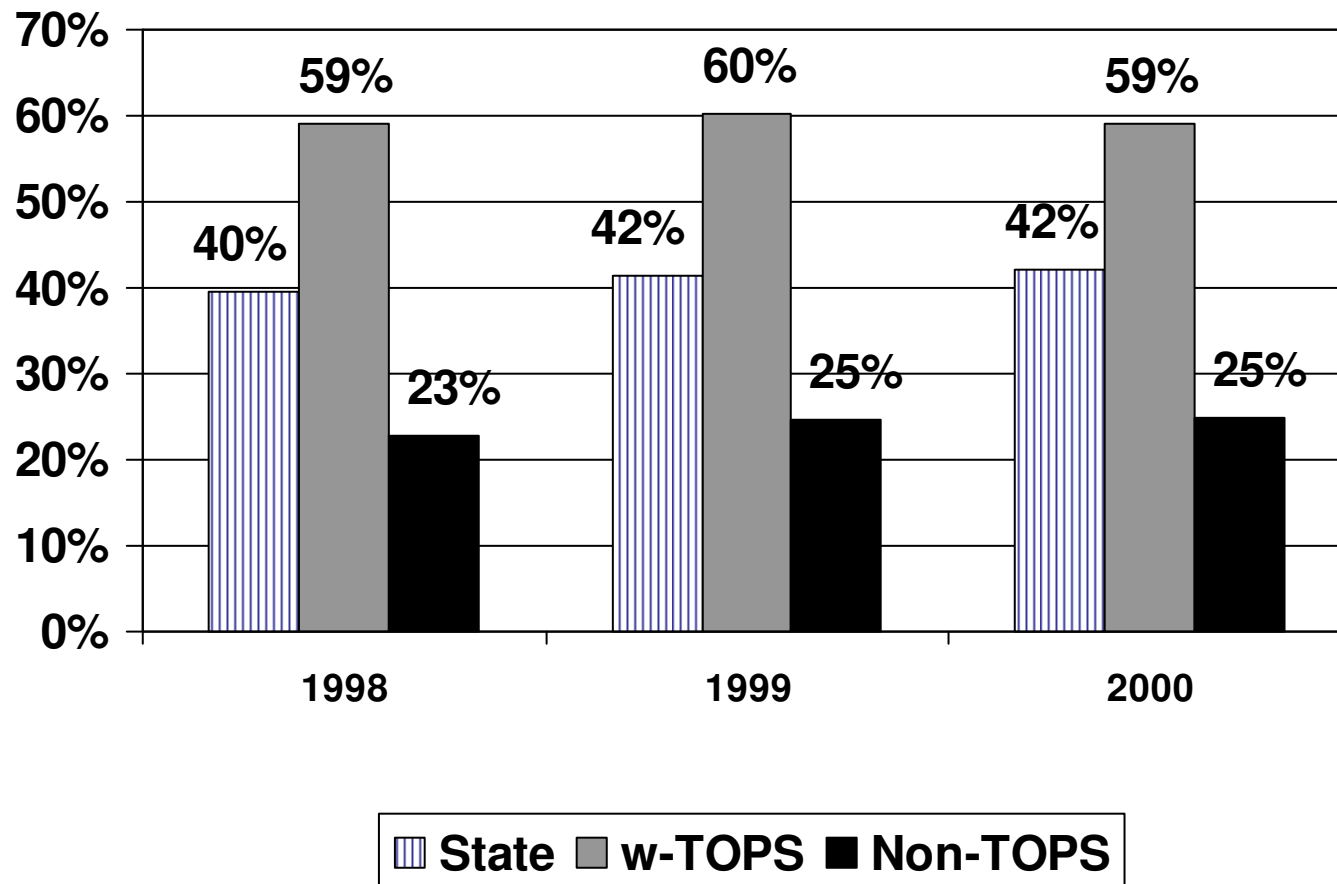


*TOPS Opportunity, Performance, or Honors Award  
Not including TOPS Tech*

*Source: LOSFA, Regents  
Public Institutions*

- To promote academic success by requiring completion of a rigorous high school core curriculum
  - *Students who take the core curriculum score significantly better on the ACT*
  - *More students in the graduating class are taking the core and more are being determined eligible for TOPS*
  - *Students receiving a TOPS award persist in college at a higher rate than non-TOPS students*
  - *Students receiving TOPS graduate from college at a higher rate and in a shorter period of time than non-TOPS students*

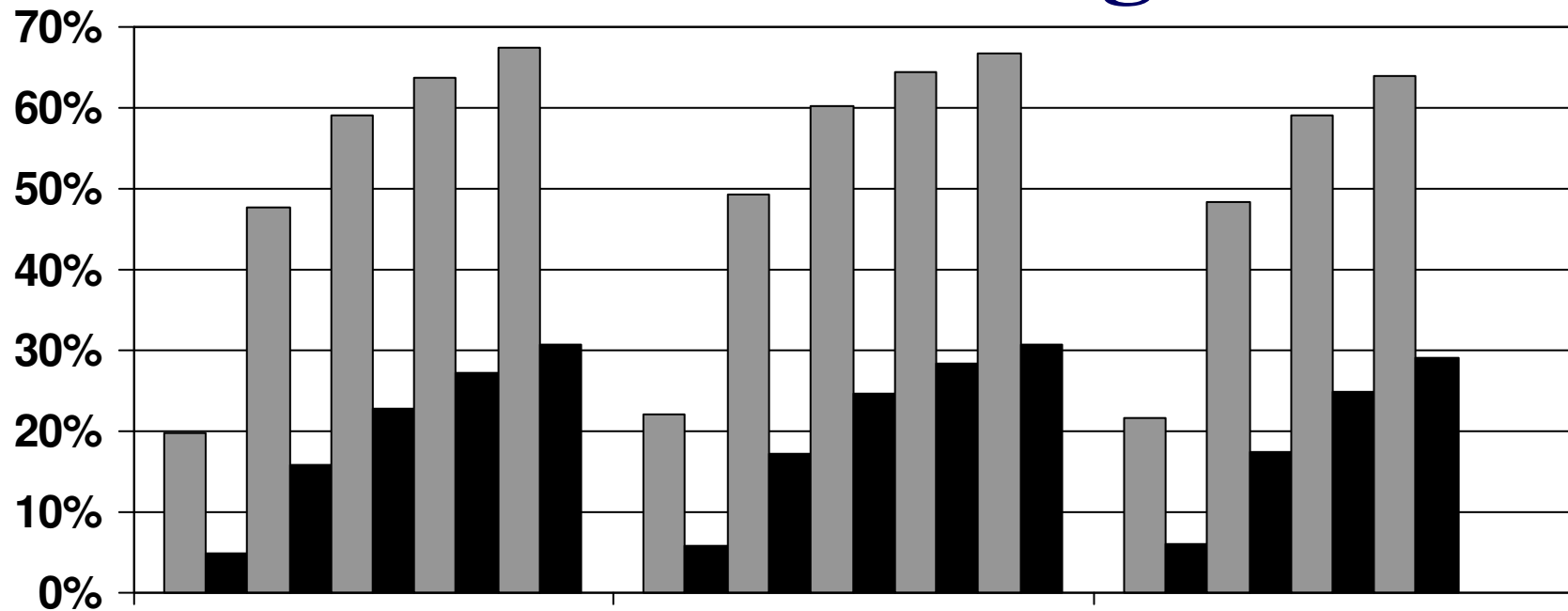
# *Graduating: 6-year Rate Baccalaureate Degrees*



*TOPS Opportunity, Performance, or Honors Award  
Not including TOPS Tech*

*Source: LOSFA, Regents  
Public 4-year Universities*

# Graduating: Time to Baccalaureate Degree



	1998	1999	2000
4 yrs w-TOPS	20%	22%	22%
4 yrs Non-TOPS	5%	6%	6%
5 yrs w-TOPS	48%	49%	48%
5 yrs Non-TOPS	16%	17%	17%
<b>6 yrs w-TOPS</b>	<b>59%</b>	<b>60%</b>	<b>59%</b>
<b>6 yrs Non-TOPS</b>	<b>23%</b>	<b>25%</b>	<b>25%</b>
7 yrs w-TOPS	64%	65%	64%
7 yrs Non-TOPS	27%	28%	29%
8 yrs w-TOPS	67%	67%	
8 yrs Non-TOPS	31%	31%	

Source: LOSFA, Regents  
Public 4-year Universities

- To keep Louisiana's best and brightest in the state to pursue postsecondary educational opportunities
  - *Almost 90% of the high school graduates eligible for TOPS stay in Louisiana to pursue their college education*
  - *The percent of students staying in Louisiana for postsecondary education has increased*
  - *A larger number of students with higher ACT scores are remaining in Louisiana to attend college*



**GO Grant**  
*Louisiana's Need-Based  
Student Financial Assistance  
Program*

# Louisiana GO Grant

- Louisiana residents
  - First time freshmen
  - Adults, aged  $\geq 25$ , not enrolled for one year
- Receiving PELL
- Enrolled at a Louisiana public or private (LAICU) college or university
  - Fulltime or part-time

# Fall 2007 Awards

Institution Type	Amount	Students
Public 4-year	\$4,024,410	4,316
Public 2-year	\$493,000	549
Private	\$641,360	680
<b><u>TOTAL</u></b>	<b><u>\$5,158,770</u></b>	<b><u>5,545</u></b>

*26 of 36 institutions*

*1/2 Annual Award*

*5,119 fulltime  
426 part-time*

**...as of 11/05/2007**